



## Label Printing Scale

## CL3000



CL3000-P (Pole Model)

**Boost Efficiency with the CAS CL3000 Label Printing Scale**

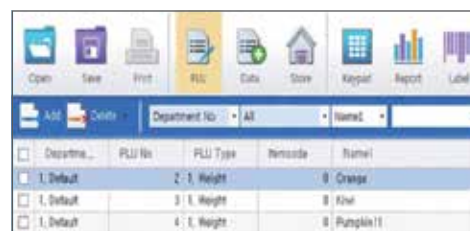
In today's fast-paced retail environment, efficiency is key. The CAS CL3000 Label Printing Scale is designed to help you save time and money, all while providing clear and professional product labels for your customers. *Fully compatible with CL Works Pro Software!*

**Measurement  
Canada Approved**

Easy to Load Labels



Customize Your Product Labels



Easy Programming with CL Works Pro!



# CL3000 Series

In today's fast-paced retail environment, efficiency is key. The CAS CL3000 Label Printing Scale is designed to help you save time and money, all while providing clear and professional product labels for your customers.

## Crystal Clear Displays

Easy to read  
LCD and Alphanumeric

## Aluminum Body

Long lasting stable performance

## Keyboard

72 Direct & 72 Indirect PLU keys  
35 Function Keys for CL3000-B  
36 Function Keys for CL3000-P



CL3000-B (Bench Model)

*Store up to 4,000 PLUs and up to 1,000 Ingredient PLUs*

Streamline the labeling process by calling up frequently used PLUs using the quick and easily accessible PLU keys.

Both the bench and pole models of the CAS CL3000 have 72 Direct and 72 Indirect PLU Keys for a total of 144 PLU Keys.

In addition to the PLU Keys, the CL3000 includes 35 Function Keys (36 on the Pole Model). Use these keys to for easy access to changing label formats, accessing settings, or performing other functions.



CL3000-P (Pole Model)

## Integrated Printer

The CAS CL3000 is equipped with an integrated direct thermal printer that produces clear 202 dpi label printing with printing speeds up to 100mm/sec. Various die cut or continuous label sizes can be used up to 60 mm (56 mm printable) wide and 120 mm in length.



## Communications

Quickly transfer PLU data via Wi-Fi, Ethernet, or RS-232C for scale to computer or computer to scale.

- Scale to Scale
- Scale to Computer
- Computer to Scale



Customer Side Displays

## Networking Capabilities



- TCP/IP Communications
- Ethernet or Wireless

- Easy PLU management control for all scales
- Simple PLU import & export
- Manage PLU's in multiple departments
- Supports WEP, WPA, & WPA2 Encryption

# Label Printing Scale



CL Works Pro is a complimentary software package available for download at [www.cas-usa.com](http://www.cas-usa.com). It's designed to simplify the management of your scale and enhance its capabilities.

Scan or click on this QR code to download



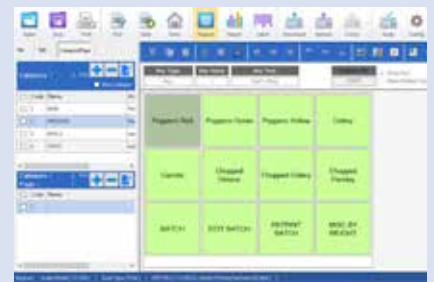
## Key Features of CL Works Pro:

- **PLU and Ingredient Management:** Easily create, edit, and organize product information (PLUs) and their ingredients.
- **Label Design:** Customize label layouts with your desired information, including product name, price, weight, ingredients, barcodes, and even your company logo.
- **Store Information Programming:** Input store-specific details like name, address, and contact information.
- **Keyboard Layout Customization:** Tailor the scale's keypad to match your specific product categories or frequently used functions.
- **Data Transfer:** Seamlessly transfer product information and label designs between your computer and the scale.

## Benefits of Using CL Works Pro:

- **Increased Efficiency:** Streamline product setup and label creation, saving you time and effort.
- **Enhanced Accuracy:** Reduce errors in product information and pricing.
- **Improved Customer Experience:** Create professional and informative product labels.
- **Flexibility:** Customize the scale to fit your specific business needs.

**CL Works Pro transforms your computer into a powerful tool for managing your label printing scale, allowing you to optimize its performance and productivity.**



## Label Formats

### 45 Standard Labels • 20 Custom Labels Available Printed Elements

- Barcodes
- Sales Discounts
- Ingredients
- Graphics
- Store Info
- Multiple Languages
- And More!



To view the standard label presets, scan this QR code



For more examples of custom label formats scan this QR code



## Additional Fields to Print

- Sales Messages
- Promotional Pricing
- Net Weight Statement
- Tare Weight
- Produced Date
- Packed Time
- Packed on Date
- Sell by Date & Time
- Use by Date
- Julian Date
- Time of Day



## Features

- 15 lb, 30 lb & 60 lb Models - Dual Range
- 4,000 PLU's with Direct Ingredient Message in PLU data file
- 45 Standard Label Formats/20 Custom Label Formats
- High Speed Thermal Printer
- USB Program Back-up and Restore
- Multiple barcode formats
- Includes Ethernet Communications (Wireless - Optional)
- English, Spanish, or Korean Characters
- CL Series Menu Code System
- Works with CL-Works Pro Software Package which includes PLU Editor - Label Editor - Keypad Editor
- Approvals - NTEP COC # 21-007  
Measurement Canada - AM-6223

## Options

- Fish Platter
- Wireless Communications

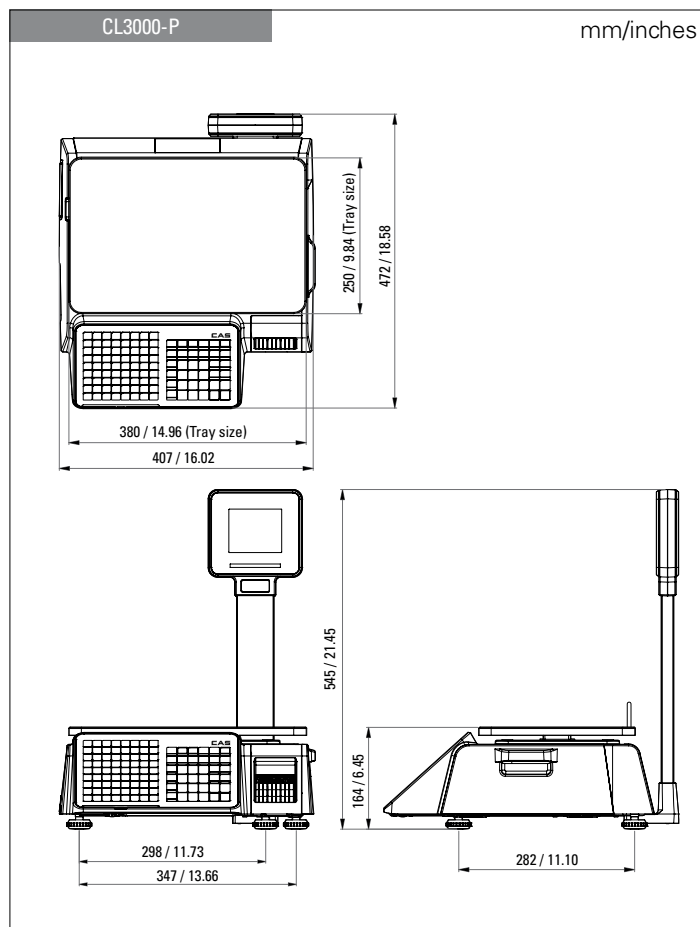
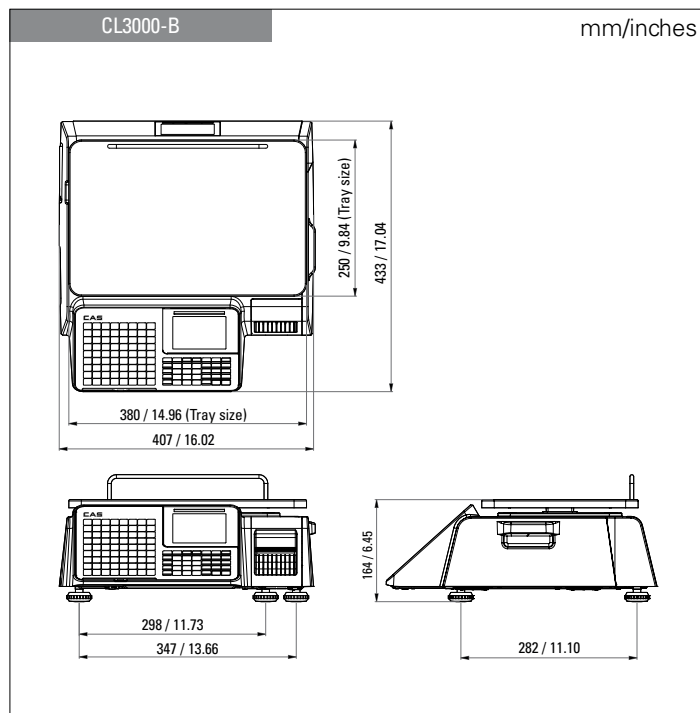
## Applications

Supermarkets, Grocery Stores, Butcher Shops, Delicatessens

## Specifications

MODEL	CL3000-B15 or P15	CL3000-B30 or P30	CL3000-B60 or P60
Max. Capacity	6 kg / 15 lb	15 kg / 30 lb	30 kg / 60lb
Resolution	6 kg / 15 lb Capacity Dual Range 0 - 6 x 0.002 lbs / 6 - 15 x 0.005 lbs 0 - 3 x 0.001 kg / 3 - 6 x 0.002 kg		
	15 kg / 30 lb Capacity Dual Range 0 - 15 x 0.005 lbs / 15 - 30 x 0.01 lbs 0 - 6 x 0.002 kg / 6 - 15 x 0.005 kg		
	30 kg / 60 lb Capacity Dual Range 0 - 30 x 0.01 lbs / 30 - 60 x 0.02 lbs 0 - 15 x 0.005 kg / 15 - 30 x 0.01 kg		
Max. Tare	6 kg / 15 lbs	15 kg / 30 lbs	30 kg / 60 lbs
A/D Conversion Rate	Approx. 8 times/sec.		
Measurement Type	Load Cell		
Platter Size	380 mm x 250 mm		
Key	Bench Model : 72 PLU keys, 35 function keys Pole Model : 72 PLU keys, 36 function keys, 144 PLU		
Display	LCD (Preset Tare : 5 digit, Weight : 6 digit, Unit Price : 7 digit, Total Price : 8 digit, PLU name: 12 digit)		
Printer	Speed 100 mm/sec / Resolution 202 dpi		
Label Size	Width : 40 mm ~ 60 mm / Length : 30 mm ~ 120 mm		
Barcode Type	UPC, EAN13, I2OF5, CODE128		
Printer Type	Direct thermal print		
Operating Temp.	-10°C ~ 40°C (14°F ~ 104°F)		
Power	AC 100 ~ 240V 50/60Hz 1.5A		

## Dimensions



V07092025