



**AfterMarket**  
Parts • Service • Support • Accessories

**Service Parts List**

**Click on the model being serviced**

**Ranger 7000 Series**

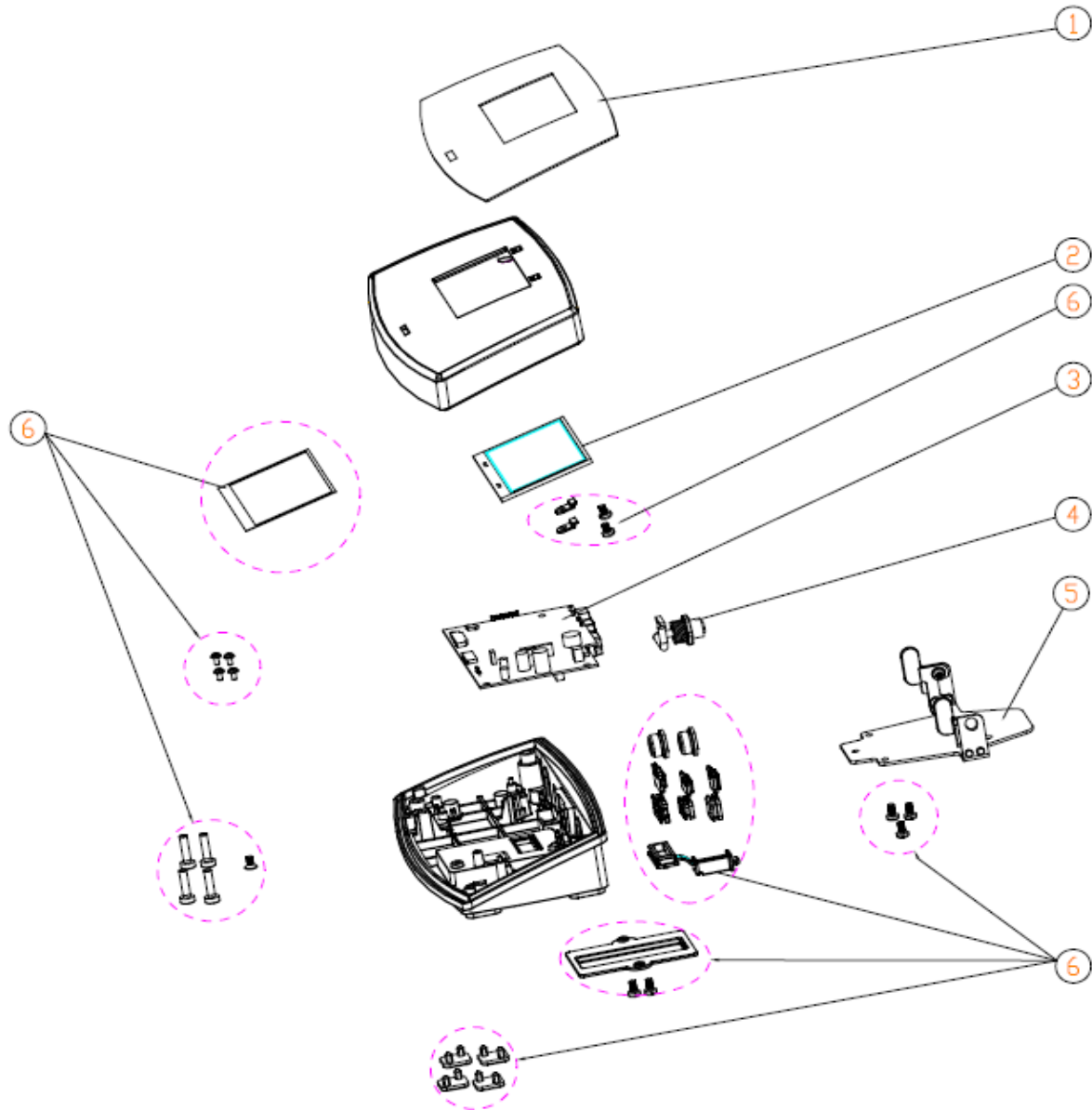
[R71 Terminal](#)

[R71MD3](#)  
[R71MD6](#)  
[R71MD15](#)  
[R71MD35](#)

[R71MHD3](#)  
[R71MHD6](#)  
[R71MHD15](#)  
[R71MHD35](#)

**R71MDx runing on Strain Gage type load cell**

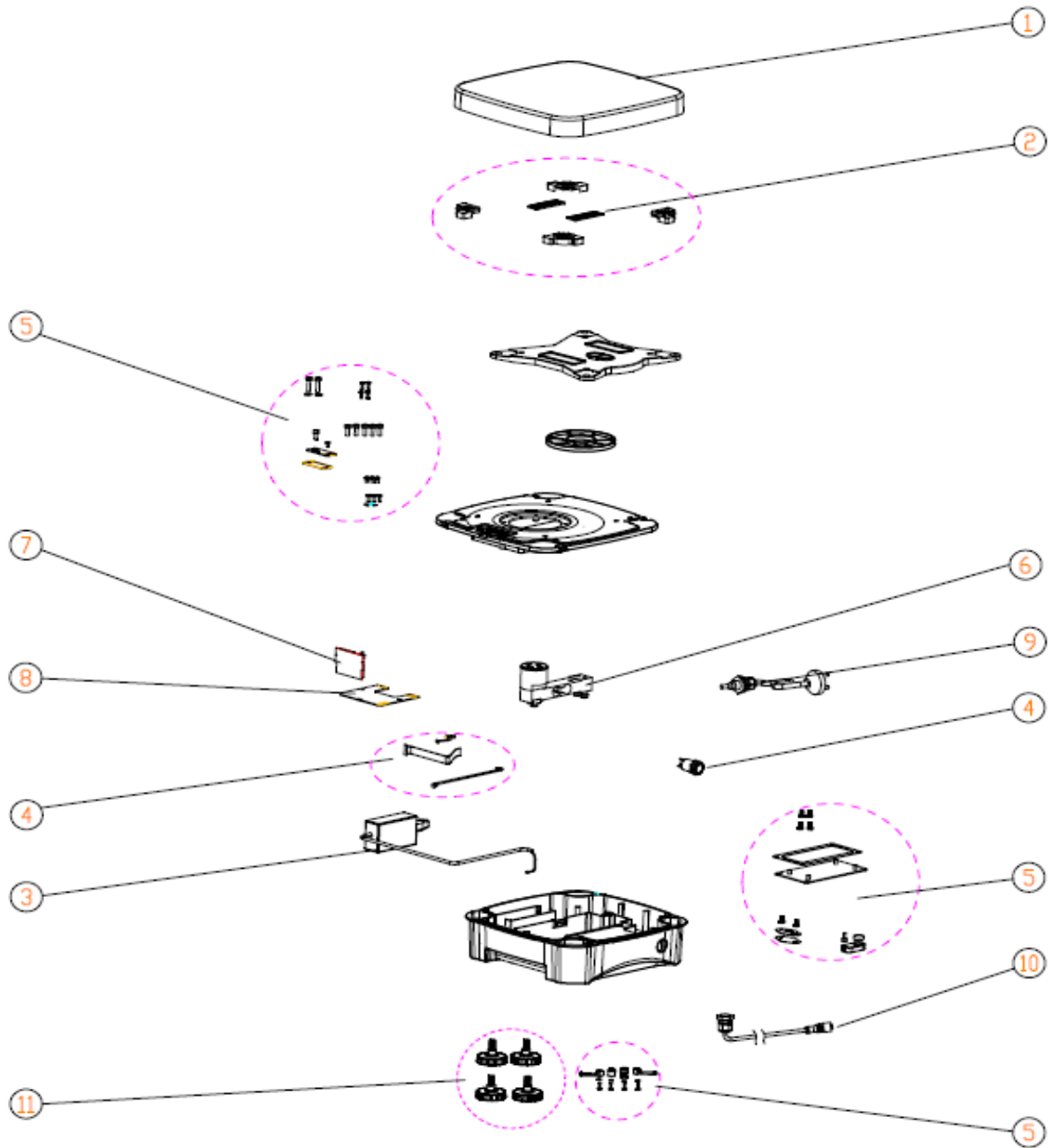
**R71MHDx runing on Monoblock type load cell**



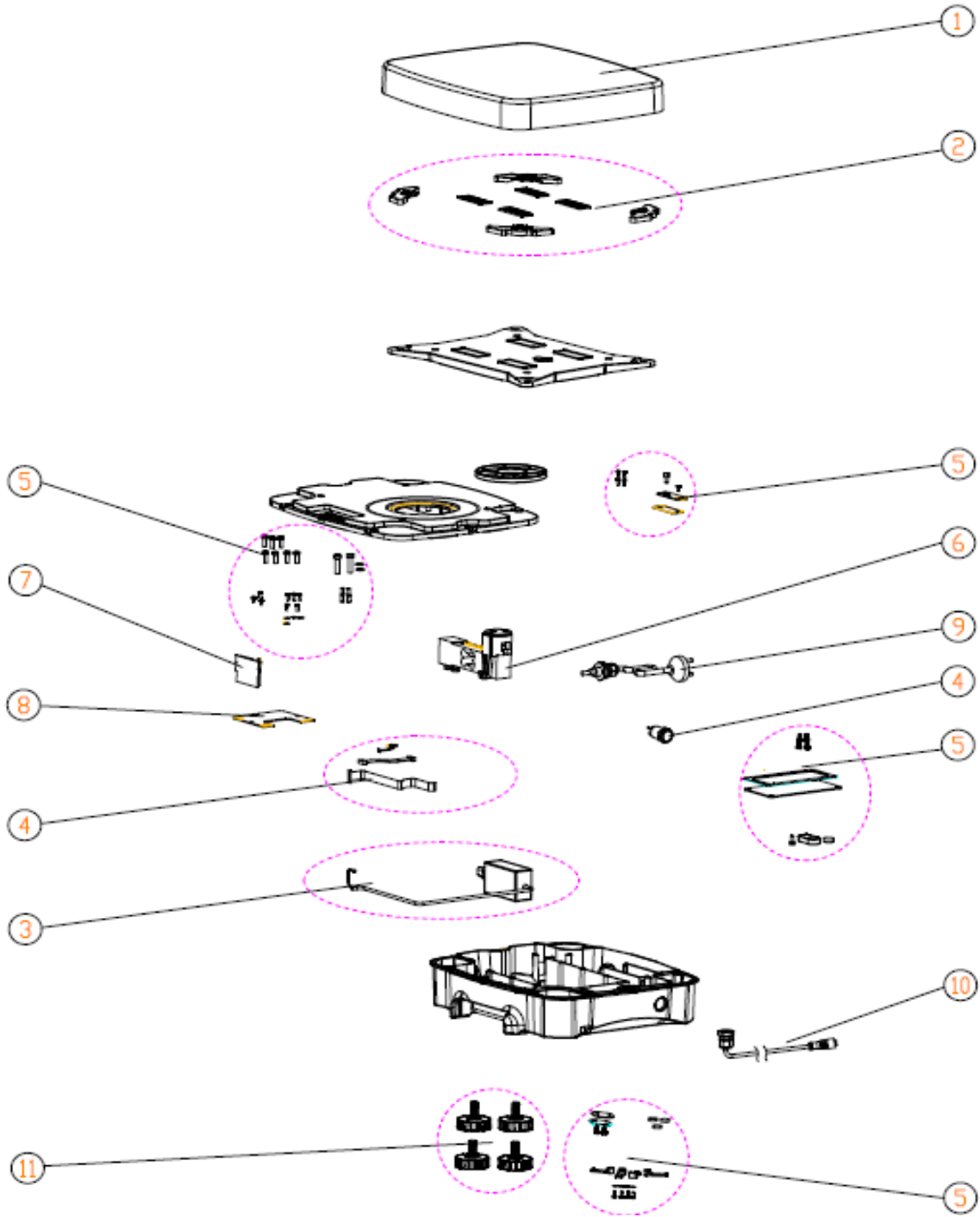
| Drawing Item | Part Number | Description                      |
|--------------|-------------|----------------------------------|
| 1            | 30095939    | SP Overlay R71 Terminal          |
| 2            | 30095940    | SP 4.3" TFT Display R71 Terminal |
| 3            | 30095930    | SP PCBA, Terminal R71            |
| 4            | 30103748    | SP 8PIN Connector Terminal, R71  |
| 5            | 30095941    | SP Bracket, Docking, R71         |
| 6            | 30095907    | SP Hardware Kit, R71             |

Note:                30095907    SP Hardware Kit, R71 consists of the below.





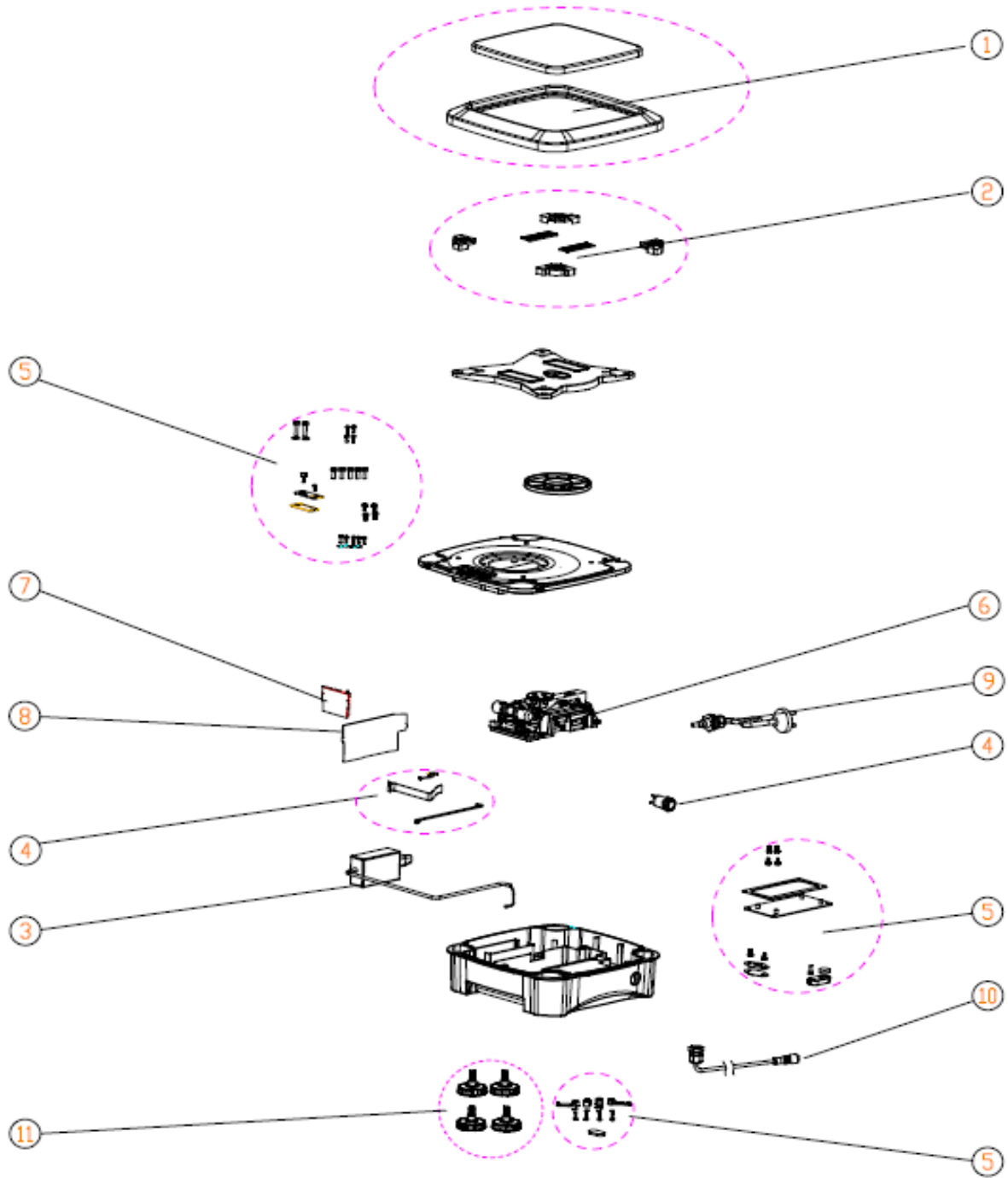
| Drawing Item | Part Number | Description                              |
|--------------|-------------|--|
| 1            | 30095934    | SP Pan, SM, SG, R71                      |
| 2            | 30113444    | SP Rubber Parts Kit, Small base, R71     |
| 3            | 30041419    | SP Adapter, with-cable, EX HiCap, R71    |
| 4            | 30095908    | SP Cables Kit, R71                       |
| 5            | 30095907    | SP Hardware Kit, R71                     |
| 6            | 30095937    | SP SG Loadcell, 5kg, R71                 |
| 7            | 30076250    | SP PCBA, LFT, EX HiCap, R71              |
| 8            | 30095909    | SP PCBA, Base, SG, R71                   |
| 9            | 30041267    | SP Power-Cord US EX HiCap, R71           |
|              | 30041462    | SP Power-Cord EU EX HiCap, R71           |
|              | 30041463    | SP Power-Cord CN EX HiCap, R71           |
|              | 30041464    | SP Power-Cord UK EX HiCap, R71           |
|              | 30041465    | SP Power-Cord AU EX HiCap, R71           |
|              | 30041466    | SP Power-Cord JP EX HiCap, R71           |
|              | 30041469    | SP Power-Cord KR EX HiCap, R71           |
| 10           | 30095936    | SP RS422 Cable Base R71                  |
| 11           | 30035606    | SP Feet Kit R21, R31, V71, V22, V41, R71 |
|              | 30095932    | SP Packaging Assembly,SM,R71             |
|              | 30095933    | SP Packaging Assembly,LA,SG,R71          |
|              | 30078209    | Box,SM,R71                               |



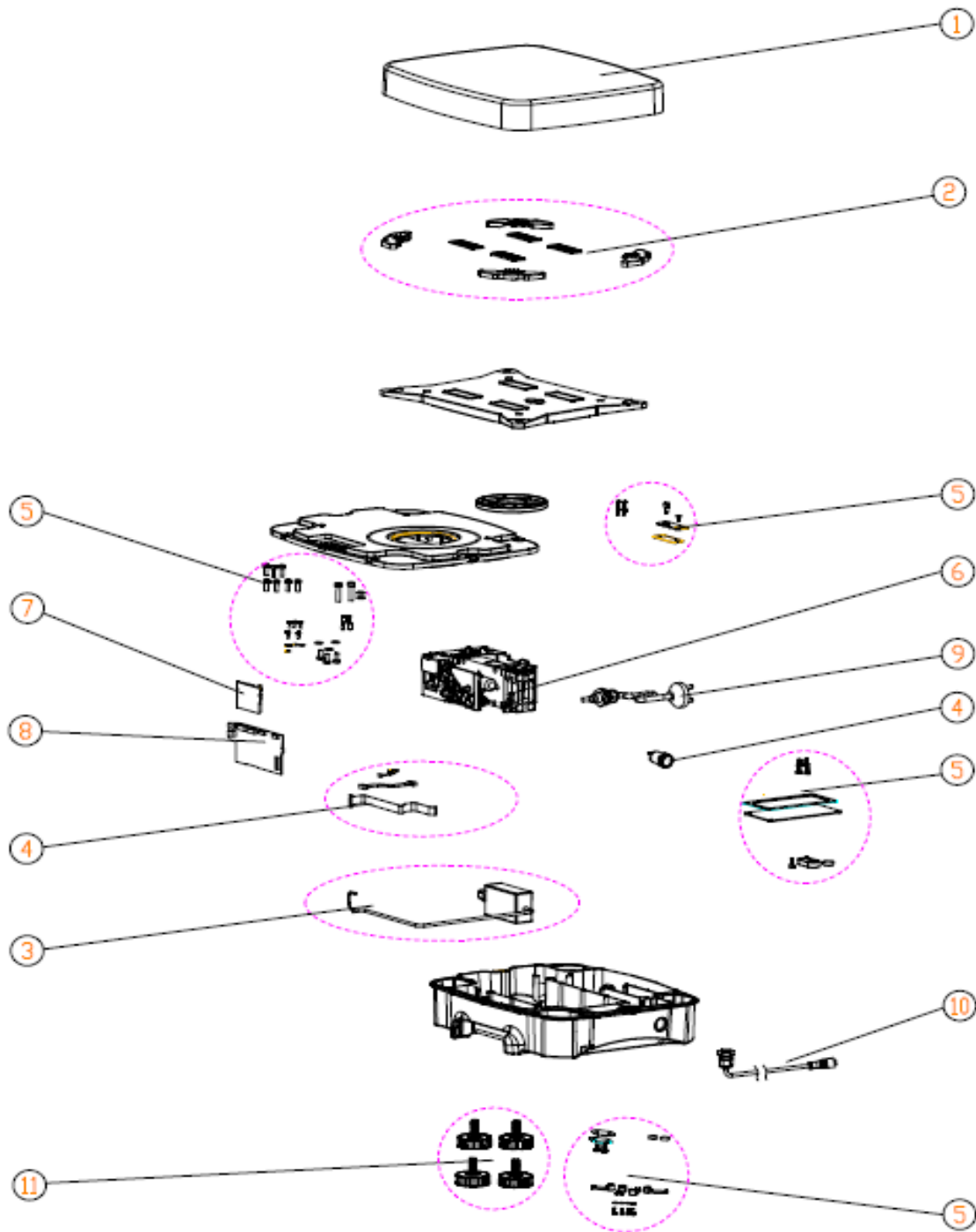
| Drawing Item | Part Number | Description                           |
|--------------|-------------|---------------------------------------|
| 1            | 30076186    | SP Large Pan EX HiCap, R71            |
| 2            | 30076187    | SP Pan support Assembly EX HiCap, R71 |
| 3            | 30041419    | SP Adapter, with-cable, EX HiCap, R71 |
| 4            | 30095908    | SP Cables Kit, R71                    |
| 5            | 30095907    | SP Hardware Kit, R71                  |
| 6            | 30095905    | SP SG Loadcell, 20kg, R71             |
| 7            | 30076250    | SP PCBA, LFT, EX HiCap, R71           |
| 8            | 30095909    | SP PCBA, Bases,SG,R71                 |
| 9            | 30041267    | SP Power-Cord US EX HiCap, R71        |
|              | 30041462    | SP Power-Cord EU EX HiCap, R71        |
|              | 30041463    | SP Power-Cord CN EX HiCap, R71        |
|              | 30041464    | SP Power-Cord UK EX HiCap, R71        |
|              | 30041465    | SP Power-Cord AU EX HiCap, R71        |
|              | 30041466    | SP Power-Cord JP EX HiCap, R71        |
|              | 30041469    | SP Power-Cord KR EX HiCap, R71        |
| 10           | 30095936    | SP RS422 Cable Base R71               |
| 11           | 30095931    | SP Feet Kit, Large R71                |
|              | 30095932    | SP Packaging Assembly,SM,R71          |
|              | 30095933    | SP Packaging Assembly,LA,SG,R71       |
|              | 30078209    | Box,SM,R71                            |







| Drawing Item | Part Number | Description                              |
|--------------|-------------|--|
| 1            | 30095935    | SP Pan,SM ,MFR, R71                      |
| 2            | 30113444    | SP Rubber Parts Kit, Small base, R71     |
| 3            | 30041419    | SP Adapter, with-cable, Ex HiCap, R71    |
| 4            | 30095908    | SP Cables Kit, R71                       |
| 5            | 30095907    | SP Hardware Kit, R71                     |
| 6            | 30095903    | SP MFR Loadcell 4kg, R71                 |
| 7            | 30076250    | SP PCBA,LFT,EX HiCap, R71                |
| 8            | 30111916    | SP PCBA, Base, MFR,R71                   |
| 9            | 30041267    | SP Power-Cord US EX HiCap, R71           |
|              | 30041462    | SP Power-Cord EU EX HiCap, R71           |
|              | 30041463    | SP Power-Cord CN EX HiCap, R71           |
|              | 30041464    | SP Power-Cord UK EX HiCap, R71           |
|              | 30041465    | SP Power-Cord AU EX HiCap, R71           |
|              | 30041466    | SP Power-Cord JP EX HiCap, R71           |
|              | 30041469    | SP Power-Cord KR EX HiCap, R71           |
| 10           | 30095936    | SP RS422 Cable Base R71                  |
| 11           | 30035606    | SP Feet Kit R21, R31, V71, V22, V41, R71 |
|              | 30095932    | SP Packaging Assembly,SM,R71             |
|              | 30095933    | SP Packaging Assembly,LA,SG,R71          |
|              | 30078209    | Box,SM,R71                               |



| Drawing Item | Part Number | Description                           |
|--------------|-------------|---------------------------------------|
| 1            | 30076186    | SP Large Pan EX HiCap, R71            |
| 2            | 30076187    | SP Pan support Assembly EX HiCap, R71 |
| 3            | 30041419    | SP Adapter, with-cable,EX HiCap R71   |
| 4            | 30095908    | SP Cables Kit,R71                     |
| 5            | 30095907    | SP Hardware Kit,R71                   |
| 6            | 30076252    | SP MFR Loadcell 35kg, EX HiCap, R71   |
| 7            | 30076250    | SP PCBA,LFT,EX HiCap, R71             |
| 8            | 30111916    | SP PCBA,Base,MFR,R71                  |
| 9            | 30041267    | SP Power-Cord US EX HiCap, R71        |
|              | 30041462    | SP Power-Cord EU EX HiCap, R71        |
|              | 30041463    | SP Power-Cord CN EX HiCap, R71        |
|              | 30041464    | SP Power-Cord UK EX HiCap, R71        |
|              | 30041465    | SP Power-Cord AU EX HiCap, R71        |
|              | 30041466    | SP Power-Cord JP EX HiCap, R71        |
|              | 30041469    | SP Power-Cord KR EX HiCap, R71        |
| 10           | 30095936    | SP RS422 Cable Base R71               |
| 11           | 30095931    | SP Feet kit,Large R71                 |
|              | 30095932    | SP Packaging Assembly,SM,R71          |
|              | 30095933    | SP Packaging Assembly,LA,SG,R71       |
|              | 30078209    | Box,SM,R71                            |