



Options

for 6103, 6112, 6115 portion control scales



Remote Display

The magnetic strip with self-adhesive backing offers easy mounting for any location. 7' (2.1 M) standard cable length.

AVAILABLE ON MODELS: 6103 6112 6115



Remote Swivel Bracket

The adjustable stainless steel "U" shaped swivel bracket offers easy mounting for virtually any environment.

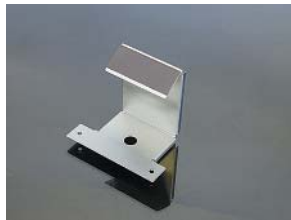
AVAILABLE ON MODELS: 6103 6112 6115



Rear Flat Bracket

The detachable stainless steel bracket makes for easy cleaning and comes standard with a sanitary magnetic strip.

AVAILABLE ON MODELS: 6103 6112 6115



Rear Flat Bracket

The detachable stainless steel bracket makes for easy cleaning and comes standard with a sanitary magnetic strip.

AVAILABLE ON MODELS: 6103 6112 6115



6" or 12" Pole Bracket

The detachable stainless steel bracket completely surrounds cable, removes for easy cleaning, and has a sanitary magnetic strip.

AVAILABLE ON MODELS: 6103 6112 6115



Front Mount Bracket

The detachable stainless steel front mount bracket makes for easy cleaning and comes standard with a sanitary magnetic strip.

AVAILABLE ON MODELS: 6103 6112 6115

Options for 6103, 6112, 6115 portion control scales



Front Mount Bracket

The detachable stainless steel front mount bracket makes for easy cleaning and comes standard with a sanitary magnetic strip.

AVAILABLE ON MODELS: 6103 6112 6115



Front Mount Shelf Bracket

The detachable stainless steel front mount shelf bracket makes for easy cleaning and comes standard with a sanitary magnetic strip.

AVAILABLE ON MODELS: 6103 6112 6115



Side/Front Mount Bracket

The detachable stainless steel bracket comes standard with a sanitary magnetic strip. Mounts to side of 6103, or front of 6112.

AVAILABLE ON MODELS: 6103 6112 6115



Side/Front Mount Shelf Bracket

The detachable stainless steel shelf bracket comes standard with a sanitary magnetic strip. Mounts to side of 6103, or front of 6112.

AVAILABLE ON MODELS: 6103 6112 6115



4' or 10' Zero Footswitch

4' model designed for installation in prep tables.
10' model for floor use.

6103 6112 6115



4' Panel Mount Zero Switch

Compact zero mechanism for mounting in prep tables.

6103 6112 6115

© Avery Weigh-Tronix, LLC 2010. All rights reserved. This publication is issued to provide outline information only which, unless agreed by Avery Weigh-Tronix in writing, may not be regarded as a representation relating to the products or services concerned. Avery Weigh-Tronix reserves the right to alter without notice the specification, design, price or conditions of supply of any product or service.

**Avery Weigh-Tronix
(Retail North America)**
1000 Armstrong Drive, Fairmont, MN 56031

PH Toll-Free: 800-637-0529
PH: 507-238-8702
FAX: 507-238-8271

E-mail: sales@salterbrecknell.com
Internet: www.salterbrecknell.com

Avery Weigh-Tronix



Product complies with F.C.C.