



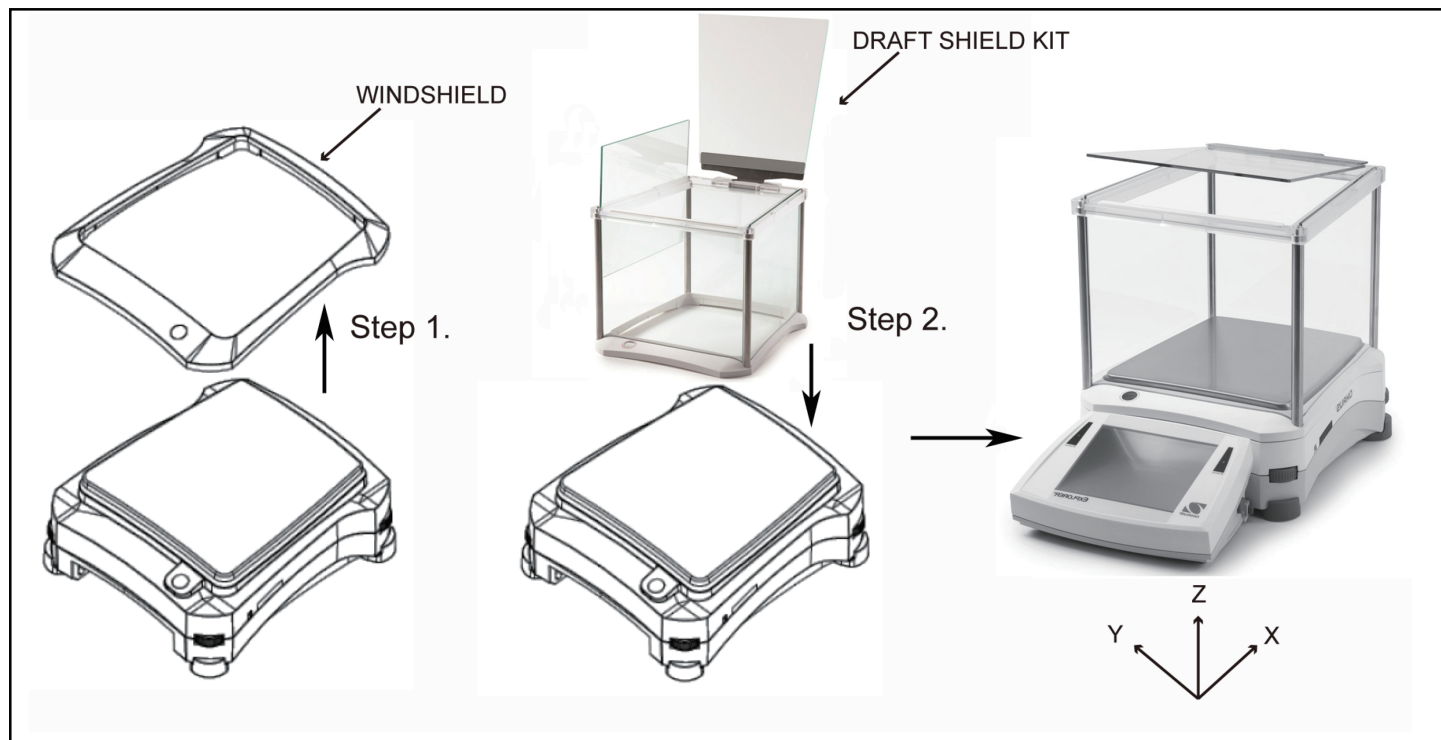
EXPLORER® DRAFT SHIELD INSTALLATION INSTRUCTIONS

INTRODUCTION

The Draft Shield is designed to be installed on the Ohaus Explorer® Top Loader Balance. Installation is easily accomplished and does not require the use of tools.

INSTALLATION

- Remove power from the balance.
- Remove the Windshield from the top of the balance. This can be removed with your fingers. See illustration (Step 1).
- Carefully unpack the Draft Shield Kit and place into position on top of the balance. See illustration (Step 2).
- Since the Draft Shield is not fastened to the balance, use caution when moving the balance to another location. It is advisable to remove the Draft Shield first before moving to avoid breakage.



DS Dimensions:

Length (X)	Width (Y)	Height (Z)
254 mm / 10.0 in.	229 mm / 9.0 in.	192 mm / 7.6 in.

Shipping Dimensions & Weight:

Length (X)	Width (Y)	Height (Z)	Weight
485 mm / 19.1 in.	380 mm / 15.0 in.	322 mm / 12.7 in.	3.7 kg

Ohaus Corporation
7 Campus drive
Suite 310
Parsippany, NJ 07054 USA
Tel: (973) 377-9000
Fax: (973) 944-7177

With offices worldwide.
www.ohaus.com

